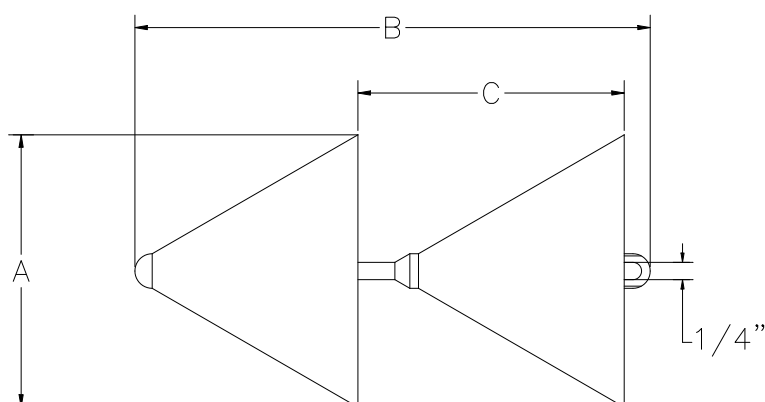


# OPERATING SPECIFICATIONS



## SERIES 58320 ULTRALIGHT BIRD

1. The ultralight bird is intended to be blown through a duct and to pull a tape or line which is attached to the rear eye of the bird.



Part Number	Nominal Duct Size	A	B	C	Net Weight
58320-200*	2"	2" 51 mm	4-3/4" 121 mm	2-1/2" 64 mm	0.6 oz 17 g
58320-250*	2-1/2"	2-3/8" 60 mm	4-3/4" 121 mm	2-1/2" 64 mm	0.7 oz 20 g
58320-300*	3"	3" 76 mm	7-7/16 189 mm	3-7/8" 98 mm	1.3 oz 38 g
58320-350	3-1/2"	3-3/4" 95 mm	7-7/16 189 mm	3-7/8" 98 mm	1.6 oz 45 g
58320-400*	4"	3-15/16" 100 mm	7-7/16 189 mm	3-7/8" 98 mm	2.2 oz 64 g
58320-500	5"	5" 127 mm	7-7/16 189 mm	3-27/32" 98 mm	4.5 oz 127 g
58320-600*	6"	6" 152 mm	7-7/16 189 mm	3-27/32" 98 mm	6.1 oz 172 g
58320-KT1	Includes parts marked with * above				1.0 lb 450 g

Dimensions and weights subject to change without notice.

# OPERATING INSTRUCTIONS



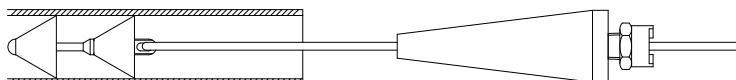
**Design &  
Manufacturing Ltd.**

**SERIES 58320 ULTRALIGHT BIRD**

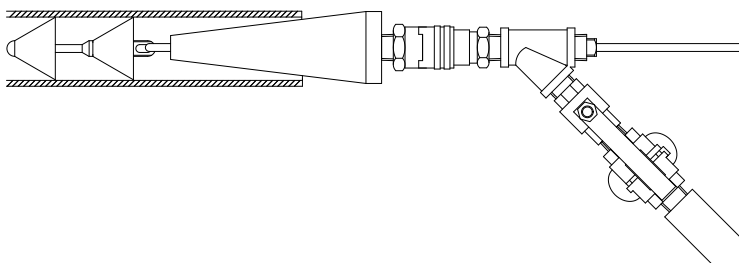


## INSTALLATION

1. Feed the line to be blown through the duct seal device.



2. Attach the line to the eye on the rear of the bird. Insert the bird into the duct.



3. Install the duct seal device in the end of the duct and begin blowing.

## SAFETY



1. Never use a worn, defective or incomplete component. Ensure that all components of the system are able to withstand the maximum system pressures. Components not rated for the system pressure may fail and release the stored energy.
2. Be prepared for the unexpected. Use recognized safety practices and wear recognized safety equipment.

## SERVICE



1. There are no service or maintenance procedures for this product.